

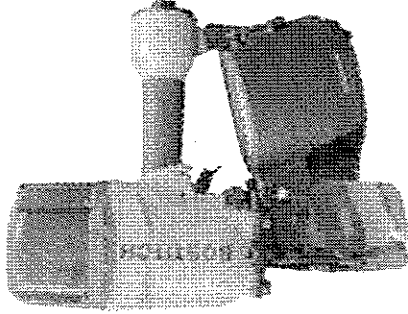
**ACCESSORIES AVAILABLE  
ACCESORIOS DISPONIBLES  
ACCESSOIRES DISPONIBLES**

- BC601 4 oz. Bostitch Air -Tool Lubricant
- BC602 1 pint Bostitch Air -Tool Lubricant
- BC603 1 pint Bostitch "Winter-Formula" Air-Tool Lubricant
- BC604 1 quart Bostitch Air -Tool Lubricant
- 851385 Loctite Grade 242 (.02 oz.)

# BOSTITCH®

## N400C-1

**COIL-FED PNEUMATIC NAILER  
CLAVADORA NEUMÁTICA ALIMENTADA POR ROLLO  
CLOUEUR PNEUMATIQUE À ENROULEMENT**



**TOOL PARTS ILLUSTRATION  
ILUSTRACIÓN DE LAS PIEZAS DE LA HERRAMIENTA  
ILLUSTRATION DES PIÈCES D'OUTILLAGE**

**▲WARNING:**

BEFORE PERFORMING REPAIRS ON THIS TOOL, ALL OPERATORS SHOULD STUDY THIS ILLUSTRATION, AS WELL AS THE PARTS LIST AND OPERATION AND MAINTENANCE MANUAL. OPERATORS SHOULD UNDERSTAND AND FOLLOW ALL SAFETY WARNINGS AND INSTRUCTIONS. KEEP THIS ILLUSTRATION WITH THE TOOL FOR FUTURE REFERENCE. IF YOU HAVE ANY QUESTIONS, CONTACT YOUR BOSTITCH REPRESENTATIVE OR DISTRIBUTOR.

**▲ADVERTENCIA:**

ANTES DE LLEVAR A CABO CUALQUIER REPARACIÓN EN LA HERRAMIENTA, TODOS LOS OPERARIOS DEBERÁN ESTUDIAR ESTA ILUSTRACIÓN, ASÍ COMO LA LISTA DE PIEZAS Y EL MANUAL DE OPERACIÓN Y MANTENIMIENTO. LOS OPERARIOS DEBERÁN ENTENDER Y SEGUIR TODAS LAS ADVERTENCIAS E INSTRUCCIONES DE SEGURIDAD. CONSERVE ESTA ILUSTRACIÓN CON LA HERRAMIENTA PARA PODER CONSULTARLA EN LO FUTURO. SI TUVIERA ALGUNA PREGUNTA, PÓNGASE EN CONTACTO CON SU REPRESENTANTE O DISTRIBUIDOR DE BOSTITCH.

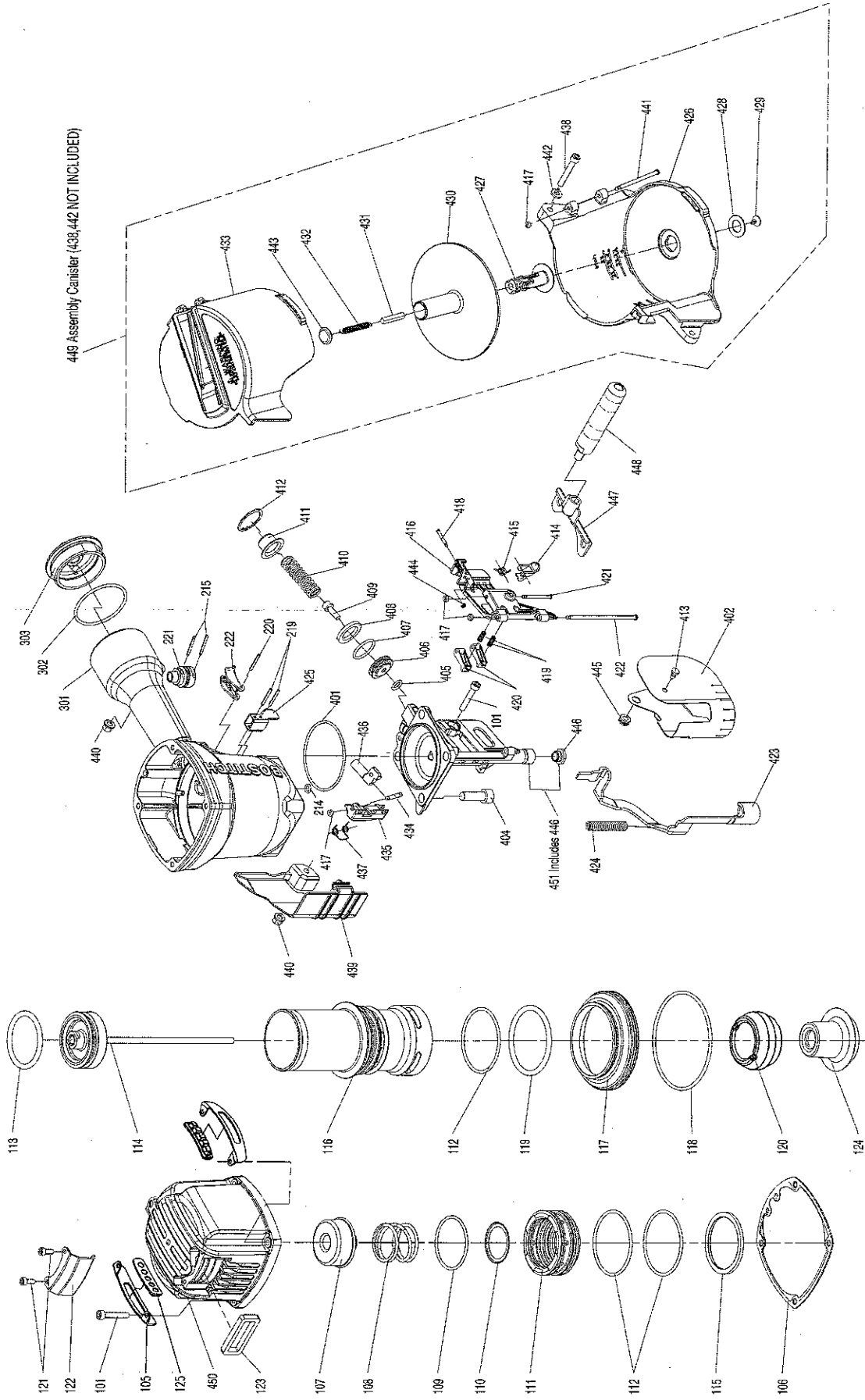
AVANT DE PROCÉDER À LA RÉPARATION DE CET OUTIL, LES OPÉRATEURS DOIVENT ÉTUDIER LA PRÉSENTE ILLUSTRATION AINSI QUE LA LISTE DE PIÈCES ET LE MANUEL D'INSTRUCTIONS ET D'ENTRETIEN ; ILS DOIVENT ÉGALEMENT COMPRENDRE ET OBSERVER LES CONSIGNES DE SÉCURITÉ ET LES INSTRUCTIONS. CONSERVER CETTE ILLUSTRATION AVEC L'OUTIL POUR RÉFÉRENCE FUTURE. SI VOUS AVEZ DES QUESTIONS, COMMUNIQUEZ AVEC VOTRE REPRESENTANT OU VOTRE DISTRIBUTEUR DE BOSTITCH.

IP1221-1REV B 8/05

**BOSTITCH®**  
Stanley Fastening Systems L.P.

# N400C-1

COIL-FED PNEUMATIC NAILER  
CLAVADORA NEUMÁTICA ALIMENTADA POR ROLLO  
CLOUEUR PNEUMATIQUE À ENROULEMENT



See reverse side for available accessories ( not included )

IP1221-1REVB 8/05  
TO BE USED WITH PARTS LIST IP1221-2 AND OPERATION AND MAINTENANCE MANUAL 171119

**BOSTITCH**

N400C-1		Parts List: IP1221-2REVB			
To be Used with tool parts illustration: IP1221-1REVB					
and operation and maintenance manual: 171119					
Serial Number on the Tool:				N400C-1	000 and Higher
ITEM	PART #	DESCRIPTION	ITEM	PART #	DESCRIPTION
101	MSC6100-35	SCREW, SHCS, M6X1.00X35 LG.	401	2041104-08020	O-RING
			402	11383-1030001	MUZZLE PROTECTOR
			404	MSC10150-30	SCREW, SHCS M10X1.50X30 LG.
105	11397-1034702	GUIDE, COVER	405	2041100-01091	O-RING
106	11302-1034701	CYLINDER CAP SEAL	406	N80128	FEED PISTON
107	11370-1030001	SEAL	407	851384	O-RING, 987 X .103
108	11360-1030001	COMPRESSION SPRING	408	N80123	BUMPER, FEED PISTON
109	2041108-06050	O-RING	409	2040100-04080	BOLT ASSY
110	11381-1030001	WASHER	410	N80122	SPRING, COMPRESSION
111	11368-1030001	HD VALVE PISTON	411	N80124	COVER, FEED PISTON
112	2041108-07050	O-RING	412	2040300-08010	C- RING
113	2041100-06011	O-RING	413	1134B-0864701	DUST SHIELD PLUG
114	11204-1030001	ASSEMBLY, PISTON/DRIVER	414	11310-0254702	DOOR LATCH
115	11399-1030001	COLLAR	415	11311-1030001	LATCH SPRING
116	11320-1030002	CYLINDER	416	11361-1034701	DOOR
117	11321-1030001	CYLINDER SPACER	417	854004	WASHER, RUBBER-7
118	2041104-11010	O-RING	418	1131K-1034701	PIN
119	2041108-07060	O-RING	419	854011	SPRING-3109, COMPRESSION
120	11327-1034702	BUMPER- A	420	N70149	PAWL, CHECK
121	MSC5080-12	SCREW, SHCS, M5X0.8X12 LG.	421	11359-1034701	PIN-NAIL STOP
122	11371-1034701	DEFLECTOR	422	11362-1034701	DOOR SHAFT PIN
123	1132T-1030001	MUFFLER	423	11330-1034701	SAFETY
124	11327-1034703	BUMPER-B	424	11337-1030001	SAFETY SPRING
125	1135R-1034701	PROTECTIVE CUSHION	425	N70145	GUIDE ARM
214	2041100-01050	O-RING	426	11354-1034701	PLATFORM, CANISTER
215	2040400-05150	SPRING PIN	427	11357-1034701	MAGAZINE POST
			428	1138Y-0954701	RUBBER RING
			429	1134M-0864701	SPRING BASE
			430	11356-1034701	CANISTER
219	102549	PIN, SPECIAL SPIRAL	431	1138W-0860001	SPACER
220	2040404-05130	SPRING PIN	432	11328-0970001	PULL SPRING
221	TVA6	KIT, TRIGGER VALVE	433	11355-1034701	CANISTER COVER
222	N50082A	ASSEMBLY, TRIGGER	434	11365-0864701	PIN FEED PISTON
			435	11306-1034701	FEED FINGER
301	11230-1038001	FRAME	436	N80121	ROD, FEED PISTON
302	MRG049431	O-RING	437	N80120	SPRING, TORSION
303	N70167	END CAP	438	MSC6100-40	SCREW, SOC. HD. CAP M6X1.00X40 LG.
			439	1134R-1034701	SPRING COVER
			440	2040501-04010	BOLT CAP
			441	1136R-1034701	MAGAZINE SHAFT PIN
			442	2040202-04010	FLAT WASHER
			443	1134N-1014701	SPRING BASE A
			444	1131D-0460001	URETHANE RETAINER
			445	219USSB-10302	LATCH SPRING BUSHING
			446	N100120	BUSHING, WEAR
			447	1139G-1034701	SECOND HANDLE BASE
			448	1137K-1030001	HANDLE
			449	7BUSB-3103003	ASSEMBLY, CANISTER
			450	7BUSB-3103001	ASSEMBLY, CAP
			451	7BUSB-3103004	ASSEMBLY, NOSE