

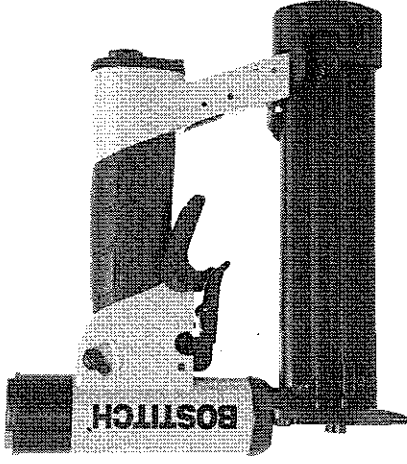
TU-216-2330

BOSTITCH HEADLESS PINNER
CLAVADORA BOSTITCH PARA CLAVITOS SIN CABEZA
CLOUEUSE BOSTITCH POUR POINTES SANS TÊTE

BOSTITCH®

TU-216-2330

INDUSTRIAL 23 GAUGE HEADLESS PINNER
INSTALADORA DE PASADORES SIN
CABEZA CALIBRE INDUSTRIAL 23
PISTOLET INDUSTRIEL À GOUPILLES SANS TÊTE CALIBRE 23



TOOL PARTS ILLUSTRATION ILUSTRACIÓN DE LAS PIEZAS DE LA HERRAMIENTA ILLUSTRATION DES PIÈCES D'OUTILLAGE

▲WARNING:

BEFORE PERFORMING REPAIRS ON THIS TOOL, ALL OPERATORS SHOULD STUDY THIS ILLUSTRATION, AS WELL AS THE PARTS LIST AND OPERATION AND MAINTENANCE MANUAL. OPERATORS SHOULD UNDERSTAND AND FOLLOW ALL SAFETY WARNINGS AND INSTRUCTIONS. KEEP THIS ILLUSTRATION WITH THE TOOL FOR FUTURE REFERENCE. IF YOU HAVE ANY QUESTIONS, CONTACT YOUR BOSTITCH REPRESENTATIVE DISTRIBUTOR.

▲ADVERTENCIA:

ANTES DE LLEVAR A CABO CUALQUIER REPARACIÓN EN LA HERRAMIENTA, TODOS LOS OPERARIOS DEBERÁN ESTUDIAR ESTA ILUSTRACIÓN, ASÍ COMO LA LISTA DE PIEZAS Y EL MANUAL DE OPERACIÓN Y MANTENIMIENTO. LOS OPERARIOS DEBERÁN ENTENDER Y SEGUIR TODAS LAS ADVERTENCIAS E INSTRUCCIONES DE SEGURIDAD. CONSERVE ESTA ILUSTRACIÓN CON LA HERRAMIENTA PARA PODER CONSULTARLA EN LO FUTURO. SI TUVIERA ALGUNA PREGUNTA, PONGASE EN CONTACTO CON SU REPRESENTANTE O DISTRIBUIDOR DE BOSTITCH.

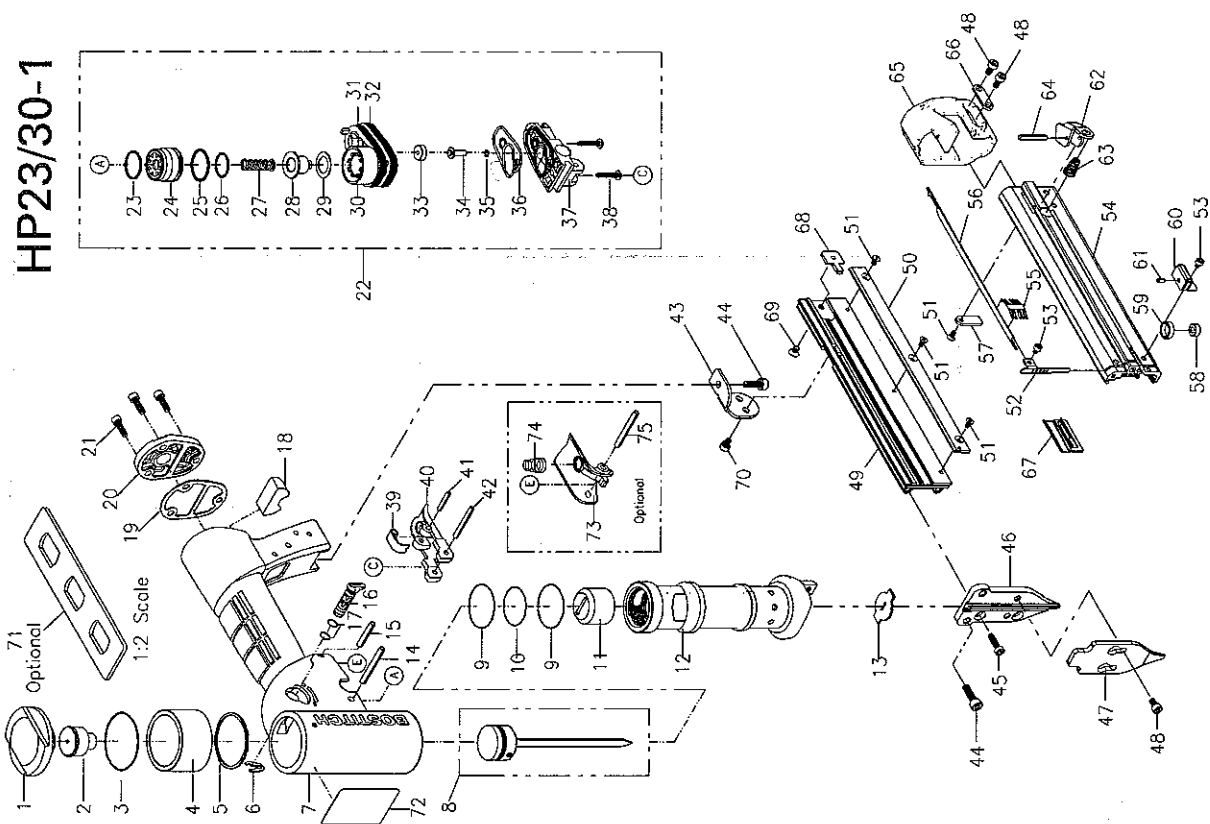
AVANT DE PROCÉDER À LA RÉPARATION DE CET OUTIL, LES OPÉRATEURS DOIVENT ÉTUDIER LA PRÉSENTE ILLUSTRATION AINSI QUE LA LISTE DE PIÈCES ET LE MANUEL D'INSTRUCTIONS ET D'ENTRETIEN : ILS DOIVENT ÉGALEMENT COMPRENDRE ET OBSERVER LES CONSIGNES DE SÉCURITÉ ET LES INSTRUCTIONS. CONSERVER CETTE ILLUSTRATION AVEC L'OUTIL POUR RÉFÉRENCE FUTURE. SI VOUS AVEZ DES QUESTIONS, COMMUNIQUEZ AVEC VOTRE REPRESENTANT OU VOTRE DISTRIBUTEUR DE BOSTITCH.

IP-1189-1REVA 2/04

BOSTITCH
Stanley Fastening Systems

TU-216-2330

INDUSTRIAL 23 GAUGE
HEADLESS PINNER
INSTALADORA DE PASADORES SIN
CABEZA CALIBRE INDUSTRIAL 23
PISTOLET INDUSTRIEL À GOUPILLES
SANS TÊTE CALIBRE 23



BOSTITCH

TU-216-2330-E

Item NO	Part NO.	Part Name	Item NO	Part NO.	Part Name
01	P2145203262	Cap	39	P2145200462	Plate, Trigger
02	P2860000600	Bumper , Piston Stop	40	P2180000366	Trigger
03	S06A002700	O-Ring	41	S0803014000	Spring Pin
04	P2230000563	Deflector	42	S0803020000	Spring Pin
05	P2230000600	Gasket	43	P2866300565	Tail Hanger
06	P2145201062	Clip	44	S0110412100	Hex. Soc. Hd. Bolt
07	G4212800	Frame Unit	45	S0110416300	Hex. Soc. Hd. Bolt
08	G0313700	Driver Unit	46	P2865200262	Driver Guide
09	S06A012100	O-Ring	47	P1245201162	Driver Guide Cover A
10	S06A002200	O-Ring	48	S0110408100	Hex. Soc. Hd. Bolt
11	P2140001200	Bumper	49	P1240000163	Magazine A
12	P2230000163	Sleeve, Cylinder	50	P1245200362	Nail Slide Guide
13	P2865200862	Joint Guide	51	S0310306100	Flat Hd. Soc. Screw
14	S2904030000	Spiral Pin	52	P1245200662	Stop Plate A
15	S2904018000	Spiral Pin	53	S0110304100	Hex. Soc. Hd. Bolt
16	P2140000666	Valve, Energy Control	54	P2860000700	Magazine B Unit
17	S06S000600	O-Ring	55	P1240000800	Spring
18	P2140005800	Muffler	56	P1245200562	Holding Bar
19	P2140003400	Gasket, End Cap	57	P1245200762	Stop Plate B
20	P2140001340	Cap, End	58	P1245201762	Bushing
21	S0110414100	Hex. Soc. Hd. Bolt	59	P1240001600	Spring
22	G1201300	Trigger Unit	60	P1246301465	Spring Bracket
23	S06A001600	O-Ring	61	S0803006000	Spring Pin
24	P2142003100	Head Valve	62	P2860000100	End Cover
25	S06Z003500	O-Ring	63	P0595203662	End Cover Plate
26	S06Z003600	O-Ring	64	P1246100457	Pusher
27	P2145201562	Spring, Head Valve	65	P0645201462	Rear Plate
28	P2140000300	Seal, Exhaust	66	S0310406100	Flat Hd. Soc. Screw
29	P2140004200	Seal Washer	67	S0110406100	Hex. Soc. Hd. Bolt
30	P2140004100	Housing, Head Valve	68	P2146305665	Wrench (Optional)
31	S06A012400	O-Ring	69	B214002001	Warning Label(W0704/L34)
32	S06A012500	O-Ring	70	P2510000166	Second Trigger
33	P2140005400	Seal, Trigger Stem	71	P1115201762	Spring
34	P2142003300	Stem	72	S0804032000	Spring Pin
35	S06A000200	O-Ring			
36	P2140000766	Seal, Valve			
37	P2140004066	Housing , Trigger			
38	S1310316100	Button Cross Hd. Screw			